

# February Newsletter

Dear GMAIS Parents and Guardians,

Happy February! It's hard to believe how quickly the year is flying by. As we settle into the second half of the school year, we are so proud of the growth and progress we've seen in our young learners. Each day brings new discoveries, and it's amazing to witness the excitement and joy that fills our classrooms.

In February, we will continue to foster a love of learning. Our teachers have planned fun, engaging activities that will support social, emotional, and cognitive development while encouraging creativity and exploration.

This month also gives us an opportunity to celebrate events like Setsubun, Valentine's Day, etc. . It's a wonderful time to reinforce kindness, friendship, and teamwork—values that are so important at this age.

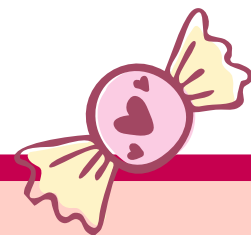
As always, thank you for being such a vital part of our preschool community. Your support, involvement, and encouragement make all the difference in your child's success and happiness. I look forward to all the learning and fun that February will bring! Wishing you all a warm and joyful month ahead!



# REMEMINDERS



- When your child is sick, please keep them home. Allow your child plenty of time to recover. They must be Fever Free for at least 24 hours before they return to school for the protection of other children.
- General Cleaning day is every last Friday of the month. Kindly pick up your child/ren on or before 5:00 p.m.
- Valentine's Retro Party will be on Friday, February 14. Please have your child/ren wear any retro attire. Bring 1 pack/box of chocolates for the Exchange chocolates activity.
- We will be having a Valentine's Day Parent's Night Out on Friday and Saturday, February 14 and February 15. Those who are interested, kindly fill - out and return the reply slip on or before February 12.
- School will be closed on February 17. There will be NO SWIMMING classes on the said day.
- Show and tell day is every Friday. Please let your child/ren bring toys/stuff from home only during show and tell day.
- Students' Medical Check - up will be on March 13. To those who will not avail the medical check - up in school, please submit your child's updated medical check - up on or before March 28, 2025.
- Letter was given for the class and kimono picture taking. Please return the reply slip to your child/ren's teachers.



# Important Dates

